

F

O

C

U

S

St John's and St Luke's Together

St John's Church



**November
2022**

St Luke's Church



Contents

Letter from Laura	3
Harvest	5
Kidz Klub	6
Question Corner	7
Keeping Warm at St John's	7
Smelly Yellow Welly Club	8
Small Groups	9
Julian Grenfell	10
Artizan International Coffee Morning	11
Scargill Parish Weekend	12
Vision Support Coffee Morning	12
Christmas Fair	12
Christmas Events: Craft Coffee Morning - Christmas Tree Festival - Toy Service - Christingle Weekend	13
People	14
Birk Crag	14
November's Calendar	16
Looking Ahead	18
Christmas Card Competition	18
Who's Who	19

The Editors of Focus magazine take every reasonable care to avoid errors in the advertisements and articles contained in this magazine. However, the inclusion of an article or advertisement in Focus does not imply either endorsement of or liability for the opinions expressed or of goods or services advertised, whether by the Editor, St John's and St Luke's PCC or St John's and St Luke's churches. The views expressed in this magazine are not necessarily those of the editor or the Clergy and whilst every care is taken not to change the original meaning, the editor and Clergy reserve the right to cut or alter articles submitted, as they deem necessary.

LETTER FROM LAURA

Dear All,

I make no excuse for continuing along the same theme that Simon did last month, because the cost of living crisis is sadly not 'last month's issue'. In fact, almost every conversation I have had recently with people both within and outside the church has mentioned this crisis either directly or indirectly – with the cost of food and fuel being a major concern.



Stephen Cottrell recently gave a sermon at the labour party conference. In it he mentioned that the word 'economy' comes from two Greek words: *oikos*, meaning household; and *nomos*, meaning law. So, the literal meaning is 'the law of the household.'



I did not know that, probably because I am neither a Greek scholar nor an economist. In fact, I find many things to do with numbers and finance confusing - I still have nightmares about GCSE maths lessons and the sine and cosine rule, and I dread tax return season. But I do know a fair bit about managing a household and about being family.

In a family there should be no preferential treatment.

In a household it would be unthinkable that at the dinner table some are fed while others go hungry. The 'law' of the household is that all are valued, all are included, all are fed and all are equal. And yet, when we go back to that word 'economy' we see that our economy is not working in that way.



In the UK, a wealthy, developed country, 30% of children live in relative poverty and 18% of those are deemed as living in 'absolute poverty' which means they lack the level of household income needed to buy basic



goods such as food.

Sadly, I imagine that number will rise significantly this winter. And when we go further afield to Somalia, a developing country, we see a tragedy unfolding as severe droughts trigger a wave of

starvation resulting in many deaths, half of which are in children under five.

And yet, as we said earlier, in a 'family' there should be no preferential treatment. In a household it would be unthinkable that at the dinner table some are fed while others go hungry.

One of the Church of England's five marks of mission is 'to seek to transform unjust structures of society...' and a second is 'to respond to human need by loving service'. As the church we should be deeply involved in speaking out in society and responding to need, not because the church is always right (far from it) but because we belong to the household - the family - of God and we have a message of hope for God's hungry world.



When we gather together to share Holy Communion, it is so much more than an individual moment shared between us and Christ: it is a moment shared between Christians as a gathered congregation and as a scattered community throughout the world and in every age. When we approach the Lord's table we do so together as

equals where all are fed and all are welcomed – a foretaste of the heavenly banquet where God's promises will be fulfilled and hunger will be no more. This should remind us how central the sharing of food is to our Christian faith.

The donations given by our church community at the Harvest service were extremely generous, and the organisations benefiting from those gifts were enormously grateful. However, the Community Grocery at New Park (run by the Resurrected Bites team) is still very low on stock as the demand for services is not currently matching the amount of food they are able to

source. They are also seeking more volunteers for both food collections and serving within the grocery itself. One way of responding to human need by loving service might be by continuing to support the Community Grocery beyond the harvest season. You can find out more by visiting the Resurrected Bites website. Or you could seek to help transform unjust structures of society by asking the government to provide much-needed extra support to low-income households throughout the cost of living crisis. There are ideas of how you can do this, or get involved in other ways, on the Christians Against Poverty (CAP) website.

<http://resurrectedbites.co.uk>

<http://capuk.org>

Let's work together to be hope for a hungry world; a community of faith who gather around the table of the Lord as equals and then take out into the world Christ's hopeful message of equality, dignity and unity through word, action and fellowship.



Every blessing,

Laura



Some of our Harvest gifts at St John's and St Luke's



Community Grocery Store at New Park

There are boxes for donations of food, toiletries, cleaning products at the back of both churches. They will be shared between Community Groceries (which will accept food beyond its best-before date) and the Homeless Project.

KIDZ KLUB HAMPERS



If you have not encountered Kidz Klub before, they are a Christian charity who run clubs and provide home visits for many families in inner city Leeds (1055 children visited each week). They aim to bless as many of their families as possible with hampers at this time of year, providing items that they are unlikely to be able to afford. We have been privileged to support them for 19 years as a parish, and we supplied one in five of their hampers two years ago (one in seven last year), so what we give makes a big difference.

Having said all of that, this year probably makes me the most reluctant to have to ask you all to dig deep in your reserves of generosity. Please **do not** feel that you are obliged in any way.

But if you can help, then see the list below. (If you hate shopping, then *money* is great. It can go towards evening up the contents of the hampers.)

Include as many of the following as possible:

Christmas biscuits or chocolate log, **Non-alcoholic** mince pies, Christmas pudding, Christmas cake, or Stollen, Savoury snacks (breadsticks, crackers, nuts, crisps), Chocolates or sweets, Soft drinks, Toys, stickers, activity books, crayons, pencil sharpeners, Christmas crackers or other Christmas decorations.



Please DO NOT include any of the following:

Basic food items (rice, pasta), Meat Products, alcohol or products containing alcohol (it is surprising how many Christmas goodies do), Out of date food or food that will be out-of-date before Jan 2023, Homemade foods, cakes or sweets (Jean's jams are an honourable exception!)



There are collection boxes at both churches.

Last date: Sunday 27th November

Thank you all so much. Caroline Wise C.Wise@leeds.ac.uk / 07989 806314 / 01423 507410)

See also: <https://www.kidzklubleeds.org.uk/>

QUESTION CORNER



Q. What did Jesus really mean when he said, on the cross, 'It is finished.'?

A. Jesus gave his life for our salvation. This was God's plan, but there was nothing automatic about it. It needed



Jesus's co-operation and his

willingness to be obedient to God's will. For he was not just a passive victim. He shared our humanity and was often tempted (not just in the wilderness) to use his divine power to avoid pain and suffering. But he chose not to.

Even on the cross he was tempted - 'Prove that you are the Messiah. Come down from the cross and save yourself,' but he stayed on the cross to save US. And the words (in John 19, 30) 'It is finished', in the original Greek text, mean 'IT IS ACCOMPLISHED'. In other words Jesus is saying something like 'I've done it. I've completed the work my Father wanted me to do, and I've not given in to the temptation to stop loving etc.'

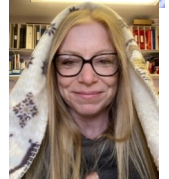
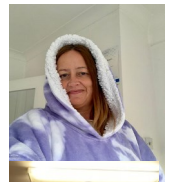
This love overcame death, for him and for us. Paul comments in Philippians 2, 8-11: *'Jesus humbled himself by becoming obedient to death on a cross. THEREFORE God exalted him to the highest place and gave him the name above every name, that at the name of Jesus every knee should bow'*

David

KEEPING WARM IN ST JOHN'S

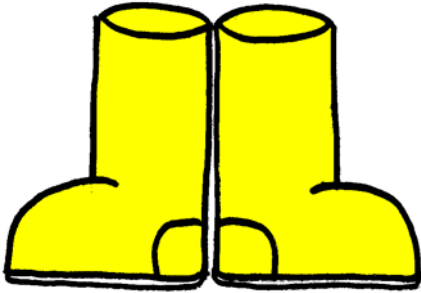


The staff team encourage you to wrap up warm for church over these colder months as, due to the significant rise in fuel costs, there will be days when the church building will feel colder than it might have across previous winters. We will be monitoring the situation closely and hope to also provide some blankets at church that can be borrowed during services and meetings (an idea that we took from our weekend at Scargill!) If you are able to knit, crochet or donate blankets then please do – they



will be much appreciated on chilly days.

SMELLY YELLOW WELLY CLUB



(Welly Club for short) is an Easter club for primary school-aged children that has run at St John's Church for 29 years. Over the years we have had between 80 and 150 children attend. It runs over three mornings in the Easter school holidays and can best be described as two hours full of fun, noise, mess, praise and learning about God. After three years away we aim to

be back in 2023 for our 30th year, and although we may have to adapt and maybe start smaller with restricted numbers, we will still have lots of the fun, friendship and worship that make SYWC the great event it is.

It can't happen without your help. Thank you to the people who have offered help already. We need young people (year 7-13) to be our Team Leaders and Gophers. We also need adult helpers to be art table leaders, registration team, crèche helpers and builders. The dates are Wed 5th, Thurs 6th and Fri (Good Fri) 7th April.

For those who are not familiar with Welly Club each year we choose a theme from the bible. We have stories and play games in teams. We make artwork to decorate our Church and the children make crafts to take home. It involves a dedicated team who plan the event and has many helpers from our Churches including many of our young people who help look after the children. We have our own crèche so those with younger children can also help and the age range of attenders and helpers in previous years has been 6 months to 91!!! It is a wonderful way for the Church community to come together and to welcome children from the local area who may not be familiar with church.

For more information or if you'd like to join the team contact us on our email at SJwellyclub@gmail.com

Yours in wellies

Niki Hutchinson, Carol Scarisbrick, Sam Westwood and Helen Tennison

ADVENT CAROL SERVICE at ST JOHN'S CHURCH

Sunday 27th November at 7.00 pm

CAROLS - READINGS - PRAYERS

ST JOHN'S & ST LUKE'S SMALL GROUPS

Our small groups are growing and developing:

At a recent meeting of group leaders, we agreed that we believe small groups can/should:

- increase a sense of **belonging** to Christ and His church
- stimulate **spiritual growth** through shared exploring of the Bible, prayer and mutual encouragement
- **equip people** for service of God in the church and the world



A crucial principle is that groups model the '**Up, In, Out**' triangle:

1. **Up** to God and understanding His love for us through worship, getting to grips with the Bible and prayer.
2. **In** by sharing our lives, challenges and joys – what we would often call fellowship
3. **Out** by sharing God's love through service, action and mission

We have eight groups running at present, with two more in formation. One of our smallest groups has added three new members recently, and our biggest group has nine members. Five groups meet in the evening and three are daytime groups with most groups meeting fortnightly.

There is also a small walking group meeting once a month – please see the notice sheets for more information.

If you would like to join a group:

We want to encourage as many people as possible to consider prayerfully joining a new group. In order to facilitate this, you can express your interest in the following ways:

- Emailing the church office church@stjohnsandstlukes.org.uk
- Speaking to/contacting
Simon Dowson, 07735 532821 simon.dowson@leeds.anglican.org
or Sarah Shepherd 07771 847149 sarah.shepherd@btinternet.com

Comfort café on 8th November will be followed at 3.45pm by a short reflective service with space to light candles to remember a loved one

JULIAN GRENFELL: NICHOLAS MOSLEY

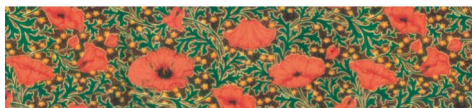
Last year in this magazine I told you of the life and poetry of Wilfred Owen who became famous posthumously with his poems about the horrors and the pity of war.

In the book I have been reading we meet, at the beginning of World War 1, a soldier called Julian Grenfell who would not claim to be a poet. He was a soldier first and because of this he only wrote a few poems, two of which were closest to his heart. They were “Into Battle” and “To a Black Greyhound”. The thread running through the book is his relationship with his mother, Ettie Desborough. Men were more often closer to their nannies and mothers, and the males like his father get very little mention in the book. They felt that going to war was a way of acknowledging the sacrifices their mothers had made bringing them up, and it would be the ultimate sacrifice if they didn’t return from the conflict. In time Julian became frustrated by his mother’s gadding about from party to lunch to the theatre, and he sought solace in his years at Oxford and in hunting and shooting.

When he went to war he wrote often to his mother saying how much he loved war and shooting other soldiers and all that went with being at war - a dichotomy between him and those who finished their part in the conflict, battle-scarred and tired, feeling that the shine had very much been rubbed off the glory of fighting due to trench life, injury and death. His life ended in 1915 before the horror of the Somme and other losses, and his brother died the year after. We can only imagine what that would have done to his mother, to lose both her sons so soon after each other.

There is so much in this book that I have had to leave out but it is interesting how differently these poets reflected their feelings around their experiences.

Persephone publish books that chronicle the lives of artists, poets, writers and socialites of the inter-war years of the 1930s and 40s. A little on the pricey side at £15 but as a reference book and something different, actually very interesting. The endpages are from the textiles of the time from curtains to paintings to wallpaper.



This article is from my copy of the

book by Nicholas Mosley as my interest is in the war poets, and it has merited a re-read or two.

Rachel Demain

COFFEE MORNING AT ST JOHN'S CHURCH HALL

Saturday 12th November

£1 entry includes tea or coffee and biscuits

Accompanied children free

Cakes, jam, marmalade, chutney, books, hand-made cards,
tombola, raffle, Artizan products

SUPPORTING ARTIZAN INTERNATIONAL



Artizan International is a Harrogate-based charity, founded and run by St Luke's member Susie Hart. Their mission is to transform the lives of differently-able people living in poverty overseas, through crafts-based training and employment opportunities. Artizan International has established projects in Ecuador and Peru, where they train and equip disabled people to become highly skilled artisans, so that they can support themselves and their families through the dignity of skilled employment, giving them hope and a future.



Frixon, who lost his legs at 16, who Artizan has trained to sew stunning cushions and bags, like this one. He's now able to support himself and his family, through the regular income he earns making beautiful sewn textiles, for a fair wage



A young man with Down's syndrome who's enjoying receiving training in the Artizan Cafe, opposite the old post-office

You can find their beautiful textiles, jewellery and cards in the Artizan shop on Oxford Street (near the Oxfam Bookshop). Susie can tell you who made every article in the shop, and how their lives have been transformed by the project. The charity also has a café and creative space around the corner, opposite the old Post Office, where they provide hospitality training for young adults with disabilities, and therapeutic crafts workshops for differently-able adults and children. It's a great place to meet friends for coffee and cake or a light lunch, whilst knowing you're transforming the life of the young adult with learning disabilities who made your cake or served your drinks. As Rosie, a young woman with Downs who works in the café, says, "Come for the cake, leave with your heart full too!"

PARISH WEEKEND AT SCARGILL

What inspired / moved / helped you?

- The vastness, beauty and peace of the surroundings
- The chapel is awesome, and the worship was inspiring
- The community welcomed us, and looked after us so well - nothing was too much trouble
- Sharing with the church family; having time to get to know each other better
- Mark's talks and guidance, and the discussions he sparked
- The prayer wall in the walled garden
- Everything!



VISION SUPPORT COFFEE MORNING

What an amazing morning! As well as our usual stalls, volunteers from Vision Support displayed and sold some of the craft items made by members of the groups they support.

We were incredibly busy, the hall was buzzing, and we raised £791! Thanks to supporters and volunteers.

CHRISTMAS FAIR AT ST LUKE'S

Saturday 3rd December 2022

10.30am - 1.30pm

STALLS • cakes • crafts • Christmas • Traidcraft •
books • toys • plants • jigsaws • jewellery

REFRESHMENTS

RAFFLE

TOMBOLA

CHRISTMAS Craft Coffee MORNING

IN AID OF ST JOHN'S & ST LUKE'S CHURCH

Friday 4th November
10-12pm & 2-4pm

26 Pecketts Way, HG1 3EW
(last house in the road) pop by!
Judy Noakes 01423 875586

TOY SERVICE
SUNDAY 4TH DECEMBER
ST JOHN'S CHURCH
10.30 am



Everyone welcome at this all-age service when we can start to celebrate Christmas in a spirit of giving to those less fortunate than ourselves.



NEW FOR 2022 St John's & St Luke's Christmas Tree Festival

We would love for you, your group or your business to be involved.

What we would like is for you to decorate your own 3' or 4' tree (real/artificial/handmade) to be displayed on one of the windowsills at St John's.

Lights must be battery operated for safety reasons. Trees can be decorated in church if necessary and you are welcome to bring any advertising leaflets to display too.

Trees to be in place by Sunday 4th December for our Toy/Parade Service and will stay up throughout the season.



Toys and toiletries will go to be sold in the shop for

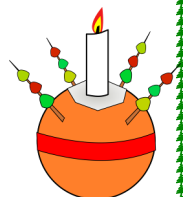
Martin House
Children's Hospice

For more information and to book your space, please speak to Gill on 01423 565129 or email church@stjohnsandstlukes.org.uk

CHRISTINGLE WEEKEND 10th/11th December

SATURDAY COFFEE MORNING - collect your Christingle kit, have coffee or tea with mince pie or toasted teacake - cake stall - jams etc - books - cards - tombola - raffle **supporting CHILDREN'S SOCIETY**

CHRISTINGLE SERVICES 4.00pm at St John's, 6.00pm at St Luke's



PEOPLE

BAPTISMS / BLESSINGS & THANKSGIVINGS

We welcome into the church family

Theo Francis Batsford
Harriet Dee Fearn
Tommy John David Saxton



INTERMENT OF ASHES

Paul Tennyson

Talk by Veronica Bird to Raise Funds for the Girlguiding Birk Crag Centre



Saturday 19th November at 2 pm
Harrogate Ladies College
Duchy Road, HG1 2QG

Bornley-born Veronica will be talking about her 35 years as a woman's prison officer including her time as Governor of ~~Aspley~~ Prison.

Tea and cakes will be served

Tickets £15 from fabc@girlguidingnyw.org.uk

All profits will go to fund the new ~~Girlguiding Birk Crag~~ Centre on ~~Cannwall~~ Road in Harrogate.

SUNDAY 13th November

is Copy Date for

DECEMBER 2022 Focus

Items for inclusion to:

SJSFocus@gmail.com

or Editor, 6 Old Trough Way,

HG1 3DE

or leave them in the drawer at the back of St John's Church

St John's & St Luke's

CHURCH OFFICE OPENING HOURS

MONDAY to THURSDAY

9.30am to 1.00pm

FRIDAY CLOSED

TELEPHONE 565129 (+ Answerphone)

email -

church@stjohnsandstlukes.org.uk



Radfield Home Care

Exceptional Care by Exceptional People

Harrogate, Wetherby & North Yorkshire



We are very happy to come out to meet you and your relatives to discuss our services. Please call us at any time for more information about how we can help you.

01423 608 760

www.radfieldhomecare.co.uk

harrogate@radfieldhomecare.co.uk

- Outings & activities
- Household tasks
- Medication support
- Wellbeing
- Dementia care
- Personal care

We are extremely proud to support older people in our community to live independently in their own homes.

Our team is passionate about delivering the highest standard of care and will always go above and beyond to help our clients.



NOVEMBER'S CALENDAR

Tuesday 1st	9-9.30am 4-5.30pm 7.00pm	Morning Prayer (SJ) 4twelve (Emma's House) Alpha + (Youth Group) (SJ)
Wednesday 2nd	9-9.30am 10.30am 10.30am	Morning Prayer (SJ) Holy Communion (SJ) Thirst - Coffee at Dene Park Community Centre
Thursday 3rd	9-9.30am 9.30-11.30am	Morning Prayer (SJ) Little Fishes (Parent & Toddler Group) (SL)
Friday 4th	1-3.00pm	Wellbeing Café (SL)
Saturday 5th	12.00pm	Baptisms (SJ)
Sunday 6th	9.00am 10.30am 10.30am 6-7.45pm	Holy Communion (SJ) Parade Service (SJ) Holy Communion (SL) Ignite (Year 7+ Youth Group) (SL)
Monday 7th	9-9.30am	Morning Prayer (SJ)
Tuesday 8th	9-9.30am 10.00am 2-3.30pm 3.45pm	Morning Prayer (SJ) Walking Group (SJ) Comfort Café (SJ) Reflective Service to remember loved ones
	4-5.30pm 7.30pm	4twelve (Emma's House) Time to Pray (SJ)
Wednesday 9th	9-9.30am 10.30am 10.30am 12.15pm	Morning Prayer (SJ) Holy Communion (SJ) Thirst - Coffee at Dene Park Community Centre Community Lunch at Bilton Community Centre
Thursday 10th	9-9.30am 9.30-11.30am	Morning Prayer (SJ) Little Fishes (Parent & Toddler Group) (SL)
	6.30-7.15pm	Evening Surgery in Church (SJ)
Friday 11th	1-3.00pm 6.30-7.15pm 7-7.45pm	Wellbeing Café (SL) Junior Choir Practice (SJ) Adult Choir Practice (SJ)
Saturday 12th	10.00am-12noon	Coffee Morning in Church Hall (SJ)
Sunday 13th	9.00am 10.30am 10.30am 12.30pm	Holy Communion (SJ) Holy Communion (SJ) Parade Service (SL) Baptisms (SJ)

	6-7.45pm	Ignite (Year 7+ Youth Group) (SL)
Monday 14 th	9-9.30am	Morning Prayer (SJ)
Tuesday 15 th	9-9.30am	Morning Prayer (SJ)
	4-5.30pm	4twelve (Emma's House)
Wednesday 16 th	9-9.30am	Morning Prayer (SJ)
	10.30am	Holy Communion (SJ)
	10.30am	Thirst - Coffee at Dene Park Community Centre
	12.00noon	Thirst Table at Dene Park Community Centre
	7.30pm	PCC Meeting (SJ)
Thursday 17 th	9-9.30am	Morning Prayer (SJ)
	9.30-11.30am	Little Fishes (Parent & Toddler Group) (SL)
Friday 18 th	1-3.00pm	Wellbeing Café (SL)
	6.30-7.15pm	Junior Choir Practice (SJ)
	7-7.45pm	Adult Choir Practice (SJ)
Sunday 20th	9.00am	Holy Communion (SJ)
	10.30am	Morning Worship (SJ)
	10.30am	Morning Worship (SL)
	6.30pm	Confirmation Service (SJ)
Monday 21 st	9-9.30am	Morning Prayer (SJ)
Tuesday 22 nd	9-9.30am	Morning Prayer (SJ)
	4-5.30pm	4twelve (Emma's House)
Wednesday 23 rd	9-9.30am	Morning Prayer (SJ)
	10.30am	Holy Communion (SJ)
	10.30am	Thirst - Coffee at Dene Park Community Centre
Thursday 24 th	9-9.30am	Morning Prayer (SJ)
	9.30-11.30am	Little Fishes (Parent & Toddler Group) (SL)
	7-9.00pm	Richard Taylor Shopping Event (SJ)
Friday 25 th	1-3.00pm	Wellbeing Café (SL)
	6.30-7.15pm	Junior Choir Practice (SJ)
	7-7.45pm	Adult Choir Practice (SJ)
Sunday 27th	9.00am	Holy Communion (SJ)
	10.30am	Holy Communion (SJ)
	10.30am	All Age Morning Worship (SL)
	2-3.00pm	Ignite (Ripley Castle)
	5.30pm	Choir Practice (SJ)
	7.00pm	Advent Carol Service (SJ)
Monday 28 th	9-9.30am	Morning Prayer (SJ)
	4.30pm	Richard Taylor School Advent Carol Service (SJ)
Tuesday 29 th	9-9.30am	Morning Prayer (SJ)
	4-5.30pm	4twelve (Emma's House)
Wednesday 30 th	9-9.30am	Morning Prayer (SJ)
	10.30am	Holy Communion (SJ)

	10.30am	Thirst - Coffee at Dene Park Community Centre
	7.30pm	Finance & Buildings Meeting (SJ)
DECEMBER		
Thursday 1 st	9-9.30am	Morning Prayer (SJ)
	9.30-11.30am	Little Fishes (Parent & Toddler Group) (SJ)
Friday 2 nd	9.30am	Bilton Grange Nativity Dress Rehearsal (SJ)
	6.30-7.15pm	Junior Choir Practice (SJ)
	7-7.45pm	Adult Choir Practice (SJ)
Saturday 3 rd	10.30am-1.30pm	Christmas Fair (SL)

LOOKING AHEAD

Christmas Tree Festival	Sunday 4 th December to Tuesday 3 rd January 2023
Toy Service	Sunday 4 th December (SJ)
Coffee Morning	Saturday 10 th December (SJ hall)
Christingle Services	Sunday 11 th December (SJ and SL)
Carol Service	Sunday 18 th December (SJ)



CHRISTMAS CARD COMPETITION

WE ARE INVITING CHILDREN ACROSS THE AREA TO DESIGN A CHRISTMAS CARD FOR RADEFIELD HOME CARE, AND WIN A PRIZE! THE WINNING IMAGE WILL BE USED ON OUR CARDS THAT WILL BE SENT OUT TO OUR CLIENTS.

TO ENTER, DESIGN A CARD AND GET A GROWN UP TO EMAIL A PICTURE OF IT TO HARROGATE@RADFIELDHOMECARE.CO.UK BY SUNDAY 20TH NOVEMBER. THE WINNER WILL BE ANNOUNCED ON FRIDAY 25TH NOVEMBER. MAKE SURE YOU INCLUDE THE CHILDS NAME, AGE AND CONTACT DETAILS FOR THE PARENT/CARER AND KEEP THE ORIGINAL PICTURE IN A SAFE PLACE.





ST JOHN'S AND ST LUKE'S TOGETHER WHO'S WHO

Parish Office Phone No: 01423 565129

Parish Office email: church@stjohnsandstlukes.org.uk

For parish information including services and events

visit Parish Websites: www.stjohnsandstlukes.org.uk

www.stlukesharrogate.org.uk

www.facebook.com/groups/stjohnsandstlukes.harrogate

www.facebook.com/stlukesharrogate

www.facebook.com/stjohnsandstlukes - for livestreaming

The Ministry Team

Simon Dowson—Team Rector

Tel 01423 561030

simon.dowson@leeds.anglican.org

Team Vicar

Vacant

Laura Martin—Curate

Tel 07497 865507

laura.martin@leeds.anglican.org

Emma James—Young People's Worker

Tel 07803 586566

YouthWork@stjohnsandstlukes.org.uk

Churchwardens

St John's

Mr Nigel Thompson

janeandnige1962@hotmail.co.uk

Mrs Jane Reichert

janereichert@hotmail.com

St Luke's

Mrs Alethea Fry

Alethea.fry@gmail.com

Editorial Team

Collation: Katie Burke 569563 and team

Editors: Jean Burton 569907 Liz Hickling

Magazine email: SJSLfocus@gmail.com

**Harrogate Strathspey and Reel Club
Scottish Country Dancing**

Every Monday Night 19.30 - 21.30

The season runs from September to June
Dance Jigs, Reels and Strathspeys with a fun and
friendly group!



Come and join us, no experience needed
It costs £3.50 per session, £39 per half year
or £62 for the full year.

Sandie Fagan 07824 458725 for more information



Bilton & Woodfield
Community Library



YOUR LOCAL LIBRARY

You can use computers or find out about local events
and information. We run storytimes for pre-school
children and reading groups for all.

**YOU could become a member of our team of
volunteers**

We are open five days a week:

Monday	1.00pm - 5.00pm
Tuesday	9.30am - 5.00pm
Wednesday	CLOSED
Thursday	9.30am - 5.00pm
Friday	9.30am - 1.00pm
Saturday	9.30am - 1.00pm
Sunday	CLOSED

In the grounds of Woodfield School, Woodfield Road
Telephone: 01423 564630

Email: info@biltonandwoodfield.org.uk
www.biltonandwoodfield.org.uk

**Hubert Swainson
Funeral Services Ltd
Private Chapels**

Distinctive personal arrangements by:
Geoffrey Brewster Dip FD
Tim Canavar

Tel 01425 504571

39 Franklin Road
Harrogate

David Bentley

07917815981

www.dbautorepairs.com

Onsite vehicle servicing and repairs
MOT by arrangement
Diagnostics



St John's Church Hall and St Luke's Church
can be hired for single occasions
or for regular events.

Contact Church Office for more information.
See page 19 for contact details

EXPERIENCED PIANO TEACHER

Jean Clay GTCL LTCL CTABRSM

Welcomes

BEGINNERS TO ADVANCED

Children and Adults

01423 548899

ROOTS
your local
greengrocer *Fruits*

30 King Edwards Drive, Harrogate, HG1 4HL.

Telephone: 01423 538445

Opening Times: 7.30am - 5.30pm Monday - Saturday

Supporting the local community